

HOW CAN I BEST HELP THOSE EXPERIENCING HOMELESSNESS?

The only difference between you and them is that you have a safe place to call home and they currently do not. So why not treat them as you are treated and as you treat others?

- First and foremost, BE HUMAN AND TREAT OTHERS LIKE HUMANS.
- Smile, be courteous, respect boundaries, have a simple conversation -- it really IS that easy!
- **Never** offer rides in your car to someone you don't know, and never stand with

anyone in a poorly lit or deserted area. If you feel unsafe, don't worry about being rude. Just leave the situation. **Your safety is top priority always!**

- Respectfully offer whatever you're comfortable giving -- many are comfortable giving money, while many are not for a variety of reasons. No matter, there are still ways to help:

- "I don't have money, but is there another way I can help you?" (*Tips on page 4*)
- Be aware of housing & homeless services in Phoenix and where to refer (*See page 2*)
- **BE THE KIND FACE TO BRIGHTEN THEIR DAY.**

PANHANDLING ≠ HOMELESSNESS

There is often a perception that panhandlers must be homeless, though this is not always the case. For this reason, we highly encourage substantive engagement and service referrals (*See pg. 2*), as well as non-monetary ways to assist those experiencing homelessness, such as toiletries, socks & underwear, water bottles, non-perishable snack items, etc. (*See page 4 for more tips*).



WHAT ASSISTANCE CAN I OFFER BEYOND MONEY?

To end homelessness, we must work together to resolve the complex issues that lead to homelessness -- behavioral and mental health; substance use and abuse; cycles of poverty; unaffordable, unsafe housing; criminalizing of survival activities rather than access to critical services. For maximum impact, we suggest meaningful engagement and service referral (*see pages 2-3*), as well as the following:

IN-KIND DONATION OPTIONS FOR INDIVIDUALS AND/OR LOCAL SHELTERS

Emergency shelters rely on in-kind donations to provide basic hygiene products. Here are some other in-kind donations you can consider for shelters and those on the streets:

YEAR-ROUND

- Socks & underwear
- Toiletries (toothbrush & paste, deodorant, shampoo & conditioner, razors & shave creme, body/lip moisturizer)
- Feminine hygiene products
- Non-perishable snack items
- Bus & light rail passes

SPRING & SUMMER

- WATER, WATER, & MORE WATER
- Reusable water bottles
- Gatorade/Powerade
- Chapstick & moisturizer
- Sun protection (hats, sunglasses, sunscreen, compact umbrella)

FALL & WINTER

- All-weather coats
- Waterproof outer gear
- Warming gear (hats, gloves & scarves, hand warmers, etc.)
- Wool socks & thermals
- Blankets & sleeping bags
- Hot food gift cards

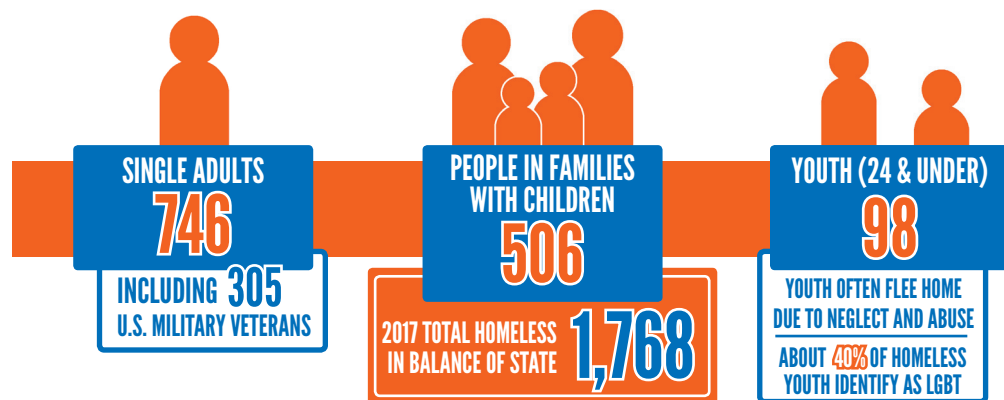
DID YOU KNOW?
Socks & underwear are often the most needed items

THIS INFORMATION BROUGHT TO YOU BY:

Arizona Housing Coalition 
Speaking up for home and hope
Proud Home of the Arizona Veterans StandDown Alliance

141 E. Palm Lane, #105 • Phoenix, AZ 85004
(602) 340-9393 • AZHousingCoalition.org

WHO IS HOMELESS IN ARIZONA'S BALANCE OF STATE?



BALANCE OF STATE

The Balance of State Continuum of Care (BOSCO) is made up of Arizona's 13 non-metro counties: APACHE, COCHISE, COCONINO, GILA, GRAHAM, GREENLEE, LA PAZ, MOHAVE, NAVAJO, PINAL, SANTA CRUZ, YAVAPAI, and YUMA. Arizona's BOSCO is a community planning process, overseen by staff of the Arizona Department of Housing (ADOH), to organize and deliver housing and services to meet the specific needs of people experiencing homelessness as they move to stable housing and maximum self-sufficiency.

The Continuum of Care process was established by the U.S. Department of Housing and Urban Development (HUD) to enable localities to apply to the federal government for McKinney-Vento Homeless Assistance Act competitive grant programs. This process brings together local governments, community businesses, faith-based organizations, non-profits, current and/or formerly homeless persons to develop local solutions to end homelessness.

For more information about Arizona's Balance of State, visit: HOUSING.AZ.GOV

HOW DO WE KNOW THESE NUMBERS?

Each January, communities across the country utilize homeless service workers and hundreds of volunteers to count the individuals experiencing homelessness, both in shelters and on the streets, in what is called a Point-In-Time (PIT) Count. This data is used at the local level to help inform and fund a variety of housing programs and supportive services to aid in each person or family's housing stability.

VOLUNTEER OPPORTUNITY

You can volunteer for the next PIT Count!
Watch for more info as 2018 nears
MORE INFO: HOUSING.AZ.GOV



WHAT ARE THESE INDIVIDUALS EXPERIENCING?

- ➔ Over 32% of those experiencing homelessness in 2016 in the Balance of State attributed their homelessness to DOMESTIC VIOLENCE, requiring individuals to engage and interact with multiple services and systems of care to attain and maintain safe, affordable housing.
- ➔ While a majority (42%) of those experiencing homelessness in Arizona's Balance of State report episodes of homelessness of less than 24 months, just over 23% reported in 2016 to having been WITHOUT A HOME FOR MORE THAN FIVE YEARS.
- ➔ Nearly 42% of those experiencing homelessness in Arizona's Balance of State are also dealing with a SERIOUS MENTAL ILLNESS or SUBSTANCE USE DISORDER, necessitating complex case management and supports in order to attain and maintain stable housing.

WHERE

CAN I REFER THOSE EXPERIENCING HOMELESSNESS IN ARIZONA'S BALANCE OF STATE CONTINUUM OF CARE?

APACHE COUNTY

OLD CONCHO COMMUNITY CENTER 35432 Hwy 180A, Concho, AZ, 85924 • (928) 337-5047

ROUND VALLEY COMMUNITY CENTER 356 S. Papago, Springerville, AZ 85938 • (928) 333-2516

As funds are available, both offer motel vouchers, rent, utilities and utility deposits for homelessness prevention, and food referral services.

COCHISE COUNTY

GOOD NEIGHBOR ALLIANCE 420 N. 7th Street Sierra Vista, AZ 85635 • (520) 439-0776

Temporary shelter for men, women and children; showers and meals are also offered.

BISBEE COALITION FOR THE HOMELESS Bisbee, AZ • CALL (928) 432-7839 (shelter)

Emergency shelter, food, clothing, and case management services for men, women, and families

HOUSE OF HOPE Douglas, AZ • CALL (928) 364-2465

10 emergency shelter beds for victims of domestic violence

CATHOLIC CHARITIES - FORGACH HOUSE Sierra Vista, AZ • CALL (928) 458-9096

40 shelter beds and 5 transitional beds for victims of domestic violence; food; service referrals

SOUTHEAST AZ HUMAN RESOURCES COUNCIL 300 W. Stewart, Willcox, AZ 85643 • (520) 384-

3120 • As funds are available: motel vouchers; move-in assistance; first month's rent; utility deposits.

COCONINO COUNTY

FLAGSTAFF SHELTER SERVICES 4155 E. Huntington Drive, Flagstaff, AZ 86004

Emergency overnight shelter for men and women, and services include dinner and shower facilities.

CATHOLIC CHARITIES - EMERGENCY SHELTER 2101 N. 4th Street, Flagstaff, AZ 86004

Emergency shelter, food, clothing, and case management services for men, women, and families

HOPE COTTAGE CALL (928) 774-9270 for more information

Women and children 65-bed emergency shelter • Meals, clothing, hygiene, and goal planning

HOUSING SOLUTIONS OF NORTHERN ARIZONA CALL (928) 214-7546 for more information

Low-income affordable housing rentals, housing counseling, and resource connection

NORTHLAND FAMILY HELP CENTER - DOMESTIC VIOLENCE & YOUTH SHELTERS

Domestic violence shelter 24-hour crisis line: CALL (928) 527-1900

Youth shelter (for birth to 17) 24-hour crisis line: CALL (928) 527-1800

SUNSHINE RESCUE MISSION 124 S. San Francisco Street, Flagstaff, AZ 86001

Men's shelter and community outreach • 3 meals/day served to public • 4-6PM emergency shelter intake for men

GILA COUNTY

GILA COUNTY COMMUNITY SERVICES • 5515 S. Apache Ave, Globe, AZ 85501 • (928) 425-7631

Community Action Program, Section 8, and employment services (Globe/Miami & Hayden/Winkelman areas)

COMMUNITY ACTION PROGRAM • 107 W. Frontier, Suite C Payson, AZ 85541 • (928) 474-1759

Utility payment/deposit assistance, eviction prevention rent assistance, mortgage assistance, utility discount programs with APS, SW Gas and Lifeline in Payson area

GRAHAM & GREENLEE COUNTIES

MT. GRAHAM SAFE HOUSE Safford, AZ • CALL (520) 348-910, 1-888-269-9104 (toll free for

Greenlee County) • For victims of domestic violence. Five days crisis stay, plus may extend to leave violent environment.

SOUTHEASTERN AZ COMMUNITY ACTION PROGRAM 283 W. 5th Street, Safford, AZ 85546 • (928)

428-2872. As funds are available: Motel vouchers; food vouchers; move-in assistance; first month's rent; utility deposits.

MOHAVE COUNTY

SAFEHOUSE Bullhead City, AZ • CALL (520) 763-SAFE (crisis line) • (520) 763-1945 (administration) 20 emergency beds for victims of domestic violence; counseling; shelter for women and children.

KINGMAN AID TO ABUSED PEOPLE (K.A.A.P.) Kingman, AZ • CALL (520) 753-6222

20 emergency beds for domestic violence victims; counseling; homeless beds when available; clothing; advocates in court; some monetary assistance to shelter clients

WESTERN AZ COUNCIL OF GOVERNMENTS (WACOG) 208 N. 4th Street Kingman, AZ 86401 • (520) 753-6247 • Provides funding for people looking for shelter; Head Start; energy assistance; weatherization; planning and grantsmanship; area agency on aging; senior programs.

NAVAJO COUNTY

HOLBROOK SENIOR CENTER 216 NE Central Avenue, Holbrook, AZ 86025 • (928) 524-6044

As funds are available, motel vouchers, rent, utilities, and deposits for homelessness prevention; food; referral services

NAVAJO COUNTY EMERGENCY SERVICES Navajo Cty Government Center - Holbrook, AZ 86025 • (928) 524-4251 • Referral center for the homeless for food and shelter

WHITE MOUNTAIN CATHOLIC CHARITIES 2458 Running Bear Rd, Lakeside, AZ 85929 • (928) 367-2244 • As funds are available, motel vouchers, rent, utilities, and deposits for homelessness prevention; food; referral services

WHITE MOUNTAIN ASSOCIATION FOR VICTIMS OF DOMESTIC VIOLENCE Pinetop, AZ • CALL (928) 367-6017 • 20 emergency beds for domestic violence victims; counseling; outpatient services.

PINAL COUNTY

COMMUNITY ACTION HUMAN RESOURCES AGENCY 109 N. Sunshine Blvd, Eloy, AZ 85131 (520) 466-1112 • Emergency services; utility deposit, utility payment assistance; rent/mortgage payment assistance

PINAL COUNTY DIVISION OF HOUSING 970 N. Eleven Mile Corner Rd, Casa Grande, AZ 85222 (520) 868-7200 • Transitional housing (6-month to 2-year stay)

YAVAPAI COUNTY

CATHOLIC CHARITIES - COTTONWOOD 736 N. Main, Cottonwood, AZ 86326 • (520) 634-4254

CATHOLIC CHARITIES - PRESCOTT 434 W. Gurley Street, Prescott, AZ 86301 • (928) 778-2531

Emergency housing, homeless services and support, rental assistance/subsidy

HOME FOR NOW 631 Division Street, Prescott, AZ 86301 • (520) 771-8542

PRESCOTT AREA WOMEN'S SHELTER (PAWS) 336 N. Rush St., Prescott, AZ 86301 • (928) 778-5933

PROJECT AWARE MEN'S SHELTER 215 W. Leroux, Prescott, AZ 86303 • (520) 778-7744

SALVATION ARMY 237 S. Montezuma, Prescott, AZ 86303 • (520) 778-0150

Emergency shelter, temporary housing, and/or transitional housing

U.S. VETS - PRESCOTT (Military Veterans) 6917 E. Gurley St. Prescott, AZ 86301 • (928) 583-7204

VA DOMICILIARY CARE PROGRAM 500 N. Hwy 89, Prescott, AZ 86313 • (520) 445-4869, ext. 6325 Residential rehabilitation for U.S. military veterans

WEST YAVAPAI GUIDANCE CLINIC 624 Dameron Street, Prescott, AZ 86301 • (520) 445-5211 Transitional housing (6-month to 2-year stay); Rental assistance/subsidy

YUMA COUNTY

CROSSROADS MISSION 944 Arizona Avenue, Yuma, AZ 85364 • (520) 783-9362

Emergency shelter and housing case management (homeless, less than 6-month stay)

CATHOLIC COMMUNITY SERVICES OF WESTERN ARIZONA 690 E. 32nd Street Yuma, AZ 85364 (928) 341-9400 • Emergency housing for homeless women and their homeless children due to domestic violence; Transitional housing (6-month to 2-year stay)

>>> ARE YOU IN NEED OF ASSISTANCE IN LA PAZ OR SANTA CRUZ COUNTIES? Contact 2-1-1 Arizona by dialing 2-1-1 within Arizona, or (877) 211-8661 from anywhere