

WHAT

ASSISTANCE CAN I OFFER BEYOND MONEY?

To end homelessness, we must work together to resolve the complex issues that lead to homelessness -- behavioral and mental health; substance use and abuse; cycles of poverty; unaffordable, unsafe housing; criminalizing of survival activities rather than access to critical services. For maximum impact, we suggest meaningful engagement and service referral (see pages 2-3), as well as the following:

IN-KIND DONATION OPTIONS FOR INDIVIDUALS AND/OR LOCAL SHELTERS

Emergency shelters rely on in-kind donations to provide basic hygiene products. Here are some other in-kind donations you can consider for shelters and those on the streets:

YEAR-ROUND

- Socks & underwear
- Toiletries (toothbrush & paste, deodorant, shampoo & conditioner, razors & shave creme, body/lip moisturizer)
- Feminine hygiene products
- Non-perishable snack items
- Bus & lightrail passes

SPRING & SUMMER

- WATER, WATER, & MORE WATER
- Reuseable water bottles
- Gatorade/Powerade
- Chapstick & moisturizer
- Sun protection (hats, sunglasses, sunscreen, compact umbrella)

FALL & WINTER

- All-weather coats
- Waterproof outer gear
- Warming gear (hats, gloves & scarves, hand warmers, etc.)
- Wool socks & thermals
- Blankets & sleeping bags
- Hot food gift cards

DID YOU KNOW?
Socks & underwear are often the most needed items

GET TO KNOW THOSE EXPERIENCING HOMELESSNESS BY VOLUNTEERING

It goes without saying the best thing you can give is your time. Learn more about the obstacles faced in obtaining housing by volunteering at a local shelter or service agency.

VISIT AZHOUSINGCOALITION.ORG/MEMBERS FOR A LIST, OR START HERE:

VALLEY OF THE SUN UNITED WAY

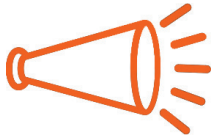
Working with & serving agencies working to end hunger and homelessness, VSUW is a leader in volunteer coordination in the Valley.
VOLUNTEER.VSUW.ORG

HANDS ON GREATER PHOENIX

Partnering with hundreds of local nonprofits, many homeless service agencies rely on HandsOn to recruit and manage volunteers.
HANDSONPHOENIX.ORG

VOLUNTEER MATCH

Acting as another volunteer recruitment platform, VolunteerMatch lists a number of opportunities with local agencies.
VOLUNTEERMATCH.ORG



BE AN ADVOCATE FOR THOSE WITHOUT HOMES

If you are passionate about ending homelessness, share that passion with your family, friends, and most importantly, your elected officials. If you have a favorite local nonprofit working to end poverty, hunger, and homelessness, share their social media pages with your social networks, and don't be shy about letting that nonprofit know how you feel about their hard work. The power of human connection is what truly brings about lasting change.

LEARN MORE AND GET INVOLVED BY VISITING AZHOUSINGCOALITION.ORG

THIS INFORMATION BROUGHT TO YOU IN PARTNERSHIP BY:

Arizona Housing Coalition
Speaking up for home and hope

Proud Home of the Arizona Veterans StandDown Alliance

141 E. PALM LANE #105 • PHOENIX, AZ
(602) 340-9393 • AZHOUSINGCOALITION.ORG



1125 W. JACKSON STREET • PHOENIX, AZ
(602) 229-1241 • HSC-AZ.ORG

WHO

IS EXPERIENCING HOMELESSNESS IN MARICOPA COUNTY?



MARICOPA REGIONAL CONTINUUM OF CARE

The Maricopa Regional Continuum of Care (MRCoC) is the largest of Arizona's three Continua of Care and is managed by a board and committee staffed by the Maricopa Association of Governments (MAG). The MRCoC Board and Committee, along with many community partners, organizes and delivers housing and services to meet the specific needs of people experiencing homelessness as they move to stable housing and maximum self-sufficiency.

The Continuum of Care (CoC) process, which also includes the Tucson/Pima County Continuum of Care as well as the Arizona Balance of State Continuum of Care, was established by the U.S. Department of Housing and Urban Development (HUD) to enable localities to apply to the federal government for McKinney-Vento Homeless Assistance Act competitive grant programs while developing local solutions to end homelessness.

For more information about work being done in Maricopa County please visit: WWW.AZMAG.GOV and search for Continuum of Care Committee.

HOW DO WE KNOW THESE NUMBERS?

Each January, communities across the country utilize homeless service workers and thousands of volunteers to count the individuals experiencing homelessness, both in shelters and on the streets, in what is called a Point-In-Time (PIT) Count. This data is used at the local level to help inform and fund a variety of housing programs and supportive services to aid in each person or family's housing stability.

VOLUNTEER OPPORTUNITY
YOU can volunteer for the next PIT Count!
Watch for more info as 2018 nears
AZMAG.GOV/HOMELESSCOUNT

WHAT

ARE THESE INDIVIDUALS EXPERIENCING?

- ➔ There is a HIGH PREVALENCE OF DISABILITIES among adults experiencing homelessness in Phoenix with 29% reporting having a SERIOUS BRAIN INJURY OR PAST HEAD TRAUMA, while 27% had been told in the past of a LEARNING OR DEVELOPMENTAL DISABILITY.
- ➔ In 2016, just over 20% of those experiencing homelessness in Maricopa County WERE WITHOUT A HOME DUE TO DOMESTIC VIOLENCE, which is unfortunately often underreported due to fear and intimidation.
- ➔ Just over 32% of those experiencing homelessness in Maricopa County in 2016 were also dealing with a SERIOUS MENTAL ILLNESS or SUBSTANCE USE DISORDER, necessitating complex case management and supportive services to attain and maintain stable housing.

WHERE CAN I REFER THOSE EXPERIENCING HOMELESSNESS?

In order to better utilize community resources and create equal opportunity access to a vast array of services, anyone experiencing homelessness in Maricopa County can access a wide range of service providers and supportive services by calling or visiting the following locations:

ADULTS EXPERIENCING HOMELESSNESS



Brian Garcia Welcome Center at Human Services Campus, Inc.
206 S. 12th Avenue, Phoenix, AZ 85007 • (602) 229-1241
OR CONTACT: Community Bridges PATH Team at 877-931-9142 (24/7)



VETERANS EXPERIENCING HOMELESSNESS



VA Community Resource & Referral Center
1500 E. Thomas Road, Suite #106, Phoenix, AZ 85014 • (602) 248-6040
OR CONTACT: Homeless Veterans Resource at (877) 4AID-VET (24/7)



FAMILIES WITH CHILDREN



TO ACCESS TO ALL EMERGENCY FAMILY SHELTERS & FAMILY SERVICE PROVIDERS
call the Family Housing Hub (FHH) at (602) 595-8700 for pre-screen & next steps
Located at UMOM New Day Centers • 3307 E. Van Buren, #108, Phoenix, AZ 85008



YOUTH EXPERIENCING HOMELESSNESS



Tumbleweed (a service of UMOM) 24-hour crisis line: (602) 841-5799 • (866) SAFE703
one•n•ten (LGBTQ): 1101 N. Central, #202, Phoenix, AZ • (602) 279-0894
Native American Connections: Call (602) 263-7773 to check availability (24/7)



WHAT IF SOMEONE IS IN CRISIS?

CALL THE MERCY MARICOPA 24/7 CRISIS LINE

(602) 222-9444
TOLL FREE: (800) 631-1314

(Managed by Crisis Response Network)

ADDITIONAL 24/7 MENTAL HEALTH CRISIS LINES

EMPACT Suicide Prevention Center Crisis Line: (480) 784-1500 or (800) 273-8255
Community Bridges, Inc. (CBI) Access Point & Transition: (877) 931-9142

24/7 HOTLINE FOR ALCOHOL & SUBSTANCE ABUSE

Community Bridges, Inc. (CBI) Access Point & Transition: (877) 931-9142

24/7 HOTLINE FOR DOMESTIC VIOLENCE

Immediate danger? Call 911! • National Domestic Violence Hotline: (800) 799-7233

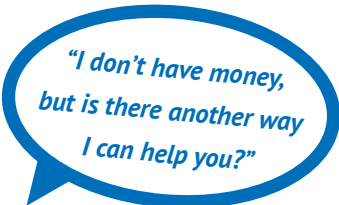
24/7 HOTLINE FOR SEX & HUMAN TRAFFICKING

Immediate danger? Call 911! • National Human Trafficking Hotline: (888) 373-7888

HOW CAN I BEST HELP THOSE EXPERIENCING HOMELESSNESS?

The only difference between you and them is that you have a safe place to call home and they currently do not. So why not treat them as you are treated and as you treat others?

- First and foremost, **BE HUMAN AND TREAT OTHERS LIKE THE HUMANS THEY ARE.**
- Smile, be courteous, respect boundaries, have a simple conversation -- it really IS that easy!
- Never offer rides in your car to someone you don't know, and never stand with anyone in a poorly lit or deserted area. If you feel unsafe, don't worry about being rude. Just leave the situation. **Your safety is top priority always!**



- Respectfully offer whatever you're comfortable giving -- the ways in which you can help can and will vary as each individual, their situation, and their needs are unique. Many people are comfortable giving money, while many are not for a variety of reasons. No matter, there are still ways to help:
- "I don't have money, but is there another way I can help you?" (*Tips on page 4*)
- Be aware of housing & homeless services in Phoenix and where to refer (*See page 2*)
- **BE THE KIND FACE TO BRIGHTEN THEIR DAY.**

THINGS TO REMEMBER FOR THOSE WITH SERIOUS MENTAL ILLNESS

BE RESPECTFUL TO THE PERSON

When someone feels respected and heard, they are more likely to return respect, and are more open to what you have to say and taking the suggested or desired action.

ACKNOWLEDGE THEIR EXPERIENCE WITH HALLUCINATIONS OR DELUSIONS

If they are experiencing hallucinations, be aware that those hallucinations or delusions are their reality -- you will not likely talk them out of this perceived reality. Communicate that you understand they are seeing or hearing something, but **do not** pretend that you are experiencing the same as this could have very serious unintended consequences.

PARANOIA MAY BE PROMINENT, AND THAT'S OKAY

Some people with paranoia may be frightened, so be aware that they may need more personal body space than you to feel safe and comfortable.

AVOID MAKING DAMAGING ASSUMPTIONS

Never assume they are not smart and will believe anything you tell them. Mental illness has **nothing** to do with level of intelligence.

DO NOT LIE OR MISLEAD

Do not lie -- it will usually break any rapport you might want to establish. If needed, set limits with the person. For example, "I only have five minutes to talk with you."

PANHANDLING ≠ HOMELESSNESS

There is often a perception that panhandlers must be homeless, though this is not always the case. Unfortunately, "professional" panhandling by those who have a home often further perpetuates many stereotypes of begging and homelessness. For this reason, we highly encourage substantive engagement and service referrals (*See pg. 2*), as well as non-monetary ways to assist those experiencing homelessness, such as toiletries, socks & underwear, water bottles, non-perishable snack items, etc. (*See page 4 for more tips.*)



WHAT ASSISTANCE CAN I OFFER BEYOND MONEY?

To end homelessness, we must work together to resolve the complex issues that lead to homelessness -- behavioral and mental health; substance use and abuse; cycles of poverty; unaffordable, unsafe housing; criminalizing of survival activities rather than access to critical services. For maximum impact, we suggest meaningful engagement and service referral (see pages 2-3), as well as the following:

IN-KIND DONATION OPTIONS FOR INDIVIDUALS AND/OR LOCAL SHELTERS

Emergency shelters rely on in-kind donations to provide basic hygiene products. Here are some other in-kind donations you can consider for shelters and those on the streets:

YEAR-ROUND

- Socks & underwear
- Toiletries (toothbrush & paste, deodorant, shampoo & conditioner, razors & shave creme, body/lip moisturizer)
- Feminine hygiene products
- Non-perishable snack items
- Bus & lightrail passes

SPRING & SUMMER

- WATER, WATER, & MORE WATER
- Reuseable water bottles
- Gatorade/Powerade
- Chapstick & moisturizer
- Sun protection (hats, sunglasses, sunscreen, compact umbrella)

FALL & WINTER

- All-weather coats
- Waterproof outer gear
- Warming gear (hats, gloves & scarves, hand warmers, etc.)
- Wool socks & thermals
- Blankets & sleeping bags
- Hot food gift cards

DID YOU KNOW?
Socks & underwear are often the most needed items

GET TO KNOW THOSE EXPERIENCING HOMELESSNESS BY VOLUNTEERING

It goes without saying the best thing you can give is your time. Learn more about the obstacles faced in obtaining housing by volunteering at a local shelter or service agency.

VISIT AZHOUSINGCOALITION.ORG/MEMBERS FOR A LIST, OR START HERE:

UNITED WAY OF TUCSON & SOUTHERN ARIZONA

Working with & serving agencies working to end hunger and homelessness, United Way is a leader in volunteer coordination in Pima County.

VOLUNTEER.UNITEDWAYTUCSON.ORG

VOLUNTEER MATCH

Acting as another volunteer recruitment platform, VolunteerMatch lists a number of opportunities with local agencies.

VOLUNTEERMATCH.ORG

BE AN ADVOCATE FOR THOSE WITHOUT HOMES

If you are passionate about ending homelessness, share that passion with your family, friends, and most importantly, your elected officials.

If you have a favorite local nonprofit working to end poverty, hunger, and homelessness, share their social media pages with your social networks, and don't be shy about letting that nonprofit know how you feel about their hard work. The power of human connection is what truly brings about lasting change.

LEARN MORE AND GET INVOLVED BY VISITING AZHOUSINGCOALITION.ORG

THIS INFORMATION BROUGHT TO YOU BY:

Arizona Housing Coalition 
Speaking up for home and hope

— Proud Home of the Arizona Veterans StandDown Alliance —

141 E. PALM LANE #105 • PHOENIX, AZ
(602) 340-9393 • AZHOUSINGCOALITION.ORG

WHO IS EXPERIENCING HOMELESSNESS IN TUCSON/PIMA COUNTY?



TUCSON/PIMA COUNTY CONTINUUM OF CARE

The Tucson/Pima County Continuum of Care is one of Arizona's three Continuum of Care and is managed by the Tucson Pima Collaboration to End Homelessness (TPCH), which is a coalition of community and faith-based organizations, government entities, businesses, and individuals, including formerly homeless persons, committed to the mission of ending homelessness and addressing the issues related to homelessness in our community.

The Continuum of Care (CoC) process, which also includes the Maricopa Regional Continuum of Care as well as the Arizona Balance of State Continuum of Care, was established by the U.S. Department of Housing and Urban Development (HUD) to enable localities to apply to the federal government for McKinney-Vento Homeless Assistance Act competitive grant programs while developing local solutions to end homelessness.

For more information regarding the Tucson/Pima County CoC and work being done to prevent and end homelessness in Pima County, please visit: WWW.TPCH.NET

HOW DO WE KNOW THESE NUMBERS?

Each January, communities across the country utilize homeless service workers and hundreds of volunteers to count the individuals experiencing homelessness, both in shelters and on the streets, in what is called a Point-In-Time (PIT) Count. This data is used at the local level to help inform and fund a variety of housing programs and supportive services to aid in each person or family's housing stability.

VOLUNTEER OPPORTUNITY
YOU can volunteer for the next PIT Count!
Watch for more info as 2018 nears
PLEASE VISIT WWW.TPCH.NET

WHAT ARE THESE INDIVIDUALS EXPERIENCING?

- ➔ At least 39% of those experiencing homelessness in 2016 in Tucson/Pima County REPORT HAVING AN INCOME. But the 2017 fair market rate for a one-bedroom apartment in Pima County is \$652, still making stable housing unattainable for many low-income residents.
- ➔ Over 24% of those experiencing homelessness in January 2017 in Tucson/Pima County attributed their homelessness to DOMESTIC VIOLENCE, requiring individuals to engage and interact with multiple services and systems of care to attain and maintain safe, affordable housing.
- ➔ Exactly 50% of those experiencing homelessness in Tucson/Pima County are also dealing with a SERIOUS MENTAL ILLNESS or SUBSTANCE USE DISORDER, necessitating complex case management and supportive services in order to attain and maintain stable housing.

WHERE CAN I REFER THOSE EXPERIENCING HOMELESSNESS?

In order to better utilize community resources and create equal opportunity access to a vast array of services, anyone experiencing homelessness in Tucson/Pima County can access a wide range of service providers and supportive services by calling or visiting the following locations:



LA FRONTERA • RAPP

1101 E. Broadway Boulevard, Suite 130, Tucson, AZ 85719
OPEN: M-F; 8AM to 4PM



LA FRONTERA ARIZONA • SONORA HOUSE

2940 N. Flowing Wells Road, Tucson, AZ 85705
OPEN: M-F; 8AM to 5PM



OLD PUEBLO COMMUNITY SERVICES

MAIN OFFICE: 4501 E. 5th Street, Tucson, AZ 85711
OPEN: M-F; 8AM to 5PM



OUR FAMILY SERVICES

2590 N. Alvernon Way, Tucson, AZ 85712
OPEN: Tues. 10AM to 1PM; Wed. 1PM to 4PM; Thurs. 10AM to 1PM
BY APPOINTMENT: Call (520) 323-1708, ext. 295, M-F between 10AM and 1PM

PRIMAVERA FOUNDATION

702 S. 6th Avenue, Tucson, AZ 85701
OPEN: Mon, Wed, Thurs, & Fri; 9AM to 12PM



SALVATION ARMY

1002 N. Main Avenue, Tucson, AZ 85705
OPEN: Tues. & Thurs.; 2PM to 5PM



SULLIVAN JACKSON EMPLOYMENT CENTER (PIMA COUNTY)

400 E. 26th Street, Tucson, AZ 85713
OPEN: M-F; 8AM to 5PM



YOUTH AGES 18-24: 24/7 SHELTER ACCESS & SAFETY

CALL SAFE PLACE: (520) 320-5122

WHAT IF SOMEONE IS IN CRISIS?

CALL NurseWise
24/7 CRISIS LINE

(866) 495-6735

(Managed by Cenpatico Integrated Care)

ADDITIONAL 24/7 MENTAL HEALTH CRISIS LINES

CODAC Community-Wide Crisis Line: (520) 622-6000
Cenpatico Crisis Intervention Peer-Operated Warm Line: (888) 404-5530

24/7 HOTLINE FOR ALCOHOL & SUBSTANCE ABUSE

Community Bridges, Inc. (CBI) Access Point & Transition: (877) 931-9142

24/7 HOTLINE FOR DOMESTIC VIOLENCE

Immediate danger? Call 911! • National Domestic Violence Hotline: (800) 799-7233

24/7 HOTLINE FOR SEX & HUMAN TRAFFICKING

Immediate danger? Call 911! • National Human Trafficking Hotline: (888) 373-7888

HOW CAN I BEST HELP THOSE EXPERIENCING HOMELESSNESS?

The only difference between you and them is that you have a safe place to call home and they currently do not. So why not treat them as you are treated and as you treat others?

• First and foremost, BE HUMAN AND TREAT OTHERS LIKE THE HUMANS THEY ARE.

• Smile, be courteous, respect boundaries, have a simple conversation -- it really IS that easy!

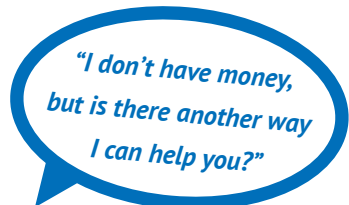
• Never offer rides in your car to someone you don't know, and never stand with anyone in a poorly lit or deserted area. If you feel unsafe, don't worry about being rude. Just leave the situation. **Your safety is top priority always!**

• Respectfully offer whatever you're comfortable giving -- the ways in which you can help can and will vary as each individual, their situation, and their needs are unique. Many people are comfortable giving money, while many are not for a variety of reasons. No matter, there are still ways to help:

• "I don't have money, but is there another way I can help you?" (*Tips on page 4*)

• Be aware of housing & homeless services in Phoenix and where to refer (*See page 2*)

• **BE THE KIND FACE TO BRIGHTEN THEIR DAY.**



THINGS TO REMEMBER FOR THOSE WITH SERIOUS MENTAL ILLNESS

BE RESPECTFUL TO THE PERSON

When someone feels respected and heard, they are more likely to return respect, and are more open to what you have to say and taking the suggested or desired action.

ACKNOWLEDGE THEIR EXPERIENCE WITH HALLUCINATIONS OR DELUSIONS

If they are experiencing hallucinations, be aware that those hallucinations or delusions are their reality -- you will not likely talk them out of this perceived reality. Communicate that you understand they are seeing or hearing something, but **do not** pretend that you are experiencing the same as this could have very serious unintended consequences.

PARANOIA MAY BE PROMINENT, AND THAT'S OKAY

Some people with paranoia may be frightened, so be aware that they may need more personal body space than you to feel safe and comfortable.

AVOID MAKING DAMAGING ASSUMPTIONS

Never assume they are not smart and will believe anything you tell them. Mental illness has **nothing** to do with level of intelligence.

DO NOT LIE OR MISLEAD

Do not lie -- it will usually break any rapport you might want to establish. If needed, set limits with the person. For example, "I only have five minutes to talk with you."

PANHANDLING ≠ HOMELESSNESS

There is often a perception that panhandlers must be homeless, though this is not always the case. Unfortunately, "professional" panhandling by those who have a home often further perpetuates many stereotypes of begging and homelessness. For this reason, we highly encourage substantive engagement and service referrals (*See pg. 2*), as well as non-monetary ways to assist those experiencing homelessness, such as toiletries, socks & underwear, water bottles, non-perishable snack items, etc. (*See page 4 for more tips*).



HOW CAN I BEST HELP THOSE EXPERIENCING HOMELESSNESS?

The only difference between you and them is that you have a safe place to call home and they currently do not. So why not treat them as you are treated and as you treat others?

- First and foremost, BE HUMAN AND TREAT OTHERS LIKE HUMANS.
- Smile, be courteous, respect boundaries, have a simple conversation -- it really IS that easy!
- Never offer rides in your car to someone you don't know, and never stand with

anyone in a poorly lit or deserted area. If you feel unsafe, don't worry about being rude. Just leave the situation. **Your safety is top priority always!**

- Respectfully offer whatever you're comfortable giving -- many are comfortable giving money, while many are not for a variety of reasons. No matter, there are still ways to help:

- "I don't have money, but is there another way I can help you?" (*Tips on page 4*)
- Be aware of housing & homeless services in Phoenix and where to refer (*See page 2*)
- **BE THE KIND FACE TO BRIGHTEN THEIR DAY.**

PANHANDLING ≠ HOMELESSNESS

There is often a perception that panhandlers must be homeless, though this is not always the case. For this reason, we highly encourage substantive engagement and service referrals (*See pg. 2*), as well as non-monetary ways to assist those experiencing homelessness, such as toiletries, socks & underwear, water bottles, non-perishable snack items, etc. (*See page 4 for more tips*).



WHAT ASSISTANCE CAN I OFFER BEYOND MONEY?

To end homelessness, we must work together to resolve the complex issues that lead to homelessness -- behavioral and mental health; substance use and abuse; cycles of poverty; unaffordable, unsafe housing; criminalizing of survival activities rather than access to critical services. For maximum impact, we suggest meaningful engagement and service referral (*see pages 2-3*), as well as the following:

IN-KIND DONATION OPTIONS FOR INDIVIDUALS AND/OR LOCAL SHELTERS

Emergency shelters rely on in-kind donations to provide basic hygiene products. Here are some other in-kind donations you can consider for shelters and those on the streets:

YEAR-ROUND

- Socks & underwear
- Toiletries (toothbrush & paste, deodorant, shampoo & conditioner, razors & shave creme, body/lip moisturizer)
- Feminine hygiene products
- Non-perishable snack items
- Bus & light rail passes

SPRING & SUMMER

- WATER, WATER, & MORE WATER
- Reusable water bottles
- Gatorade/Powerade
- Chapstick & moisturizer
- Sun protection (hats, sunglasses, sunscreen, compact umbrella)

FALL & WINTER

- All-weather coats
- Waterproof outer gear
- Warming gear (hats, gloves & scarves, hand warmers, etc.)
- Wool socks & thermals
- Blankets & sleeping bags
- Hot food gift cards

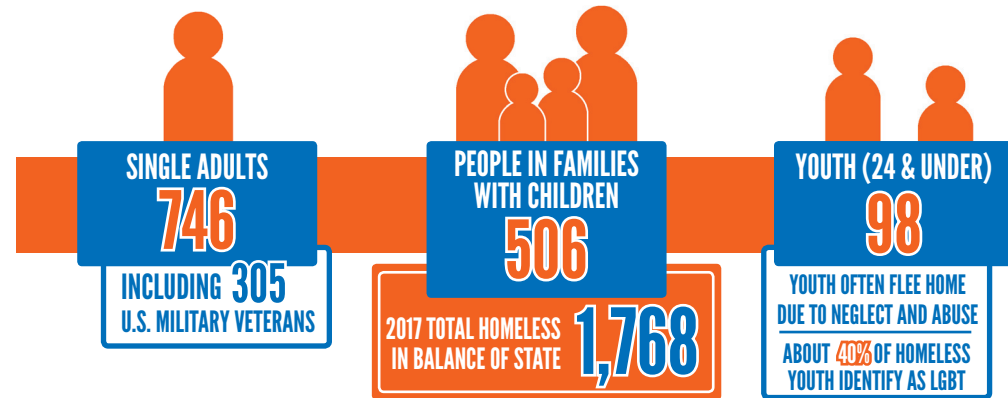
DID YOU KNOW?
Socks & underwear are often the most needed items

THIS INFORMATION BROUGHT TO YOU BY:

Arizona Housing Coalition 
Speaking up for home and hope
Proud Home of the Arizona Veterans StandDown Alliance

141 E. Palm Lane, #105 • Phoenix, AZ 85004
(602) 340-9393 • AZHousingCoalition.org

WHO IS HOMELESS IN ARIZONA'S BALANCE OF STATE?



BALANCE OF STATE

The Balance of State Continuum of Care (BOSCO) is made up of Arizona's 13 non-metro counties: APACHE, COCHISE, COCONINO, GILA, GRAHAM, GREENLEE, LA PAZ, MOHAVE, NAVAJO, PINAL, SANTA CRUZ, YAVAPAI, and YUMA. Arizona's BOSCO is a community planning process, overseen by staff of the Arizona Department of Housing (ADOH), to organize and deliver housing and services to meet the specific needs of people experiencing homelessness as they move to stable housing and maximum self-sufficiency.

The Continuum of Care process was established by the U.S. Department of Housing and Urban Development (HUD) to enable localities to apply to the federal government for McKinney-Vento Homeless Assistance Act competitive grant programs. This process brings together local governments, community businesses, faith-based organizations, non-profits, current and/or formerly homeless persons to develop local solutions to end homelessness.

For more information about Arizona's Balance of State, visit: HOUSING.AZ.GOV

HOW DO WE KNOW THESE NUMBERS?

Each January, communities across the country utilize homeless service workers and hundreds of volunteers to count the individuals experiencing homelessness, both in shelters and on the streets, in what is called a Point-In-Time (PIT) Count. This data is used at the local level to help inform and fund a variety of housing programs and supportive services to aid in each person or family's housing stability.

VOLUNTEER OPPORTUNITY

You can volunteer for the next PIT Count!
Watch for more info as 2018 nears
MORE INFO: HOUSING.AZ.GOV



WHAT ARE THESE INDIVIDUALS EXPERIENCING?

- ➔ Over 32% of those experiencing homelessness in 2016 in the Balance of State attributed their homelessness to DOMESTIC VIOLENCE, requiring individuals to engage and interact with multiple services and systems of care to attain and maintain safe, affordable housing.
- ➔ While a majority (42%) of those experiencing homelessness in Arizona's Balance of State report episodes of homelessness of less than 24 months, just over 23% reported in 2016 to having been WITHOUT A HOME FOR MORE THAN FIVE YEARS.
- ➔ Nearly 42% of those experiencing homelessness in Arizona's Balance of State are also dealing with a SERIOUS MENTAL ILLNESS or SUBSTANCE USE DISORDER, necessitating complex case management and supports in order to attain and maintain stable housing.

APACHE COUNTY

OLD CONCHO COMMUNITY CENTER 35432 Hwy 180A, Concho, AZ, 85924 • (928) 337-5047

ROUND VALLEY COMMUNITY CENTER 356 S. Papago, Springerville, AZ 85938 • (928) 333-2516

As funds are available, both offer motel vouchers, rent, utilities and utility deposits for homelessness prevention, and food referral services.

COCHISE COUNTY

GOOD NEIGHBOR ALLIANCE 420 N. 7th Street Sierra Vista, AZ 85635 • (520) 439-0776

Temporary shelter for men, women and children; showers and meals are also offered.

BISBEE COALITION FOR THE HOMELESS Bisbee, AZ • CALL (928) 432-7839 (shelter)

Emergency shelter, food, clothing, and case management services for men, women, and families

HOUSE OF HOPE Douglas, AZ • CALL (928) 364-2465

10 emergency shelter beds for victims of domestic violence

CATHOLIC CHARITIES - FORGACH HOUSE Sierra Vista, AZ • CALL (928) 458-9096

40 shelter beds and 5 transitional beds for victims of domestic violence; food; service referrals

SOUTHEAST AZ HUMAN RESOURCES COUNCIL 300 W. Stewart, Willcox, AZ 85643 • (520) 384-

3120 • As funds are available: motel vouchers; move-in assistance; first month's rent; utility deposits.

COCONINO COUNTY

FLAGSTAFF SHELTER SERVICES 4155 E. Huntington Drive, Flagstaff, AZ 86004

Emergency overnight shelter for men and women, and services include dinner and shower facilities.

CATHOLIC CHARITIES - EMERGENCY SHELTER 2101 N. 4th Street, Flagstaff, AZ 86004

Emergency shelter, food, clothing, and case management services for men, women, and families

HOPE COTTAGE CALL (928) 774-9270 for more information

Women and children 65-bed emergency shelter • Meals, clothing, hygiene, and goal planning

HOUSING SOLUTIONS OF NORTHERN ARIZONA CALL (928) 214-7546 for more information

Low-income affordable housing rentals, housing counseling, and resource connection

NORTHLAND FAMILY HELP CENTER - DOMESTIC VIOLENCE & YOUTH SHELTERS

Domestic violence shelter 24-hour crisis line: CALL (928) 527-1900

Youth shelter (for birth to 17) 24-hour crisis line: CALL (928) 527-1800

SUNSHINE RESCUE MISSION 124 S. San Francisco Street, Flagstaff, AZ 86001

Men's shelter and community outreach • 3 meals/day served to public • 4-6PM emergency shelter intake for men

GILA COUNTY

GILA COUNTY COMMUNITY SERVICES • 5515 S. Apache Ave, Globe, AZ 85501 • (928) 425-7631

Community Action Program, Section 8, and employment services (Globe/Miami & Hayden/Winkelman areas)

COMMUNITY ACTION PROGRAM • 107 W. Frontier, Suite C Payson, AZ 85541 • (928) 474-1759

Utility payment/deposit assistance, eviction prevention rent assistance, mortgage assistance, utility discount programs with APS, SW Gas and Lifeline in Payson area

GRAHAM & GREENLEE COUNTIES

MT. GRAHAM SAFE HOUSE Safford, AZ • CALL (520) 348-910, 1-888-269-9104 (toll free for

Greenlee County) • For victims of domestic violence. Five days crisis stay, plus may extend to leave violent environment.

SOUTHEASTERN AZ COMMUNITY ACTION PROGRAM 283 W. 5th Street, Safford, AZ 85546 • (928)

428-2872. As funds are available: Motel vouchers; food vouchers; move-in assistance; first month's rent; utility deposits.

MOHAVE COUNTY

SAFEHOUSE Bullhead City, AZ • CALL (520) 763-SAFE (crisis line) • (520) 763-1945 (administration) 20 emergency beds for victims of domestic violence; counseling; shelter for women and children.

KINGMAN AID TO ABUSED PEOPLE (K.A.A.P.) Kingman, AZ • CALL (520) 753-6222

20 emergency beds for domestic violence victims; counseling; homeless beds when available; clothing; advocates in court; some monetary assistance to shelter clients

WESTERN AZ COUNCIL OF GOVERNMENTS (WACOG) 208 N. 4th Street Kingman, AZ 86401 • (520) 753-6247 • Provides funding for people looking for shelter; Head Start; energy assistance; weatherization; planning and grantsmanship; area agency on aging; senior programs.

NAVAJO COUNTY

HOLBROOK SENIOR CENTER 216 NE Central Avenue, Holbrook, AZ 86025 • (928) 524-6044

As funds are available, motel vouchers, rent, utilities, and deposits for homelessness prevention; food; referral services

NAVAJO COUNTY EMERGENCY SERVICES Navajo Cty Government Center - Holbrook, AZ 86025 • (928) 524-4251 • Referral center for the homeless for food and shelter

WHITE MOUNTAIN CATHOLIC CHARITIES 2458 Running Bear Rd, Lakeside, AZ 85929 • (928) 367-2244 • As funds are available, motel vouchers, rent, utilities, and deposits for homelessness prevention; food; referral services

WHITE MOUNTAIN ASSOCIATION FOR VICTIMS OF DOMESTIC VIOLENCE Pinetop, AZ • CALL (928) 367-6017 • 20 emergency beds for domestic violence victims; counseling; outpatient services.

PINAL COUNTY

COMMUNITY ACTION HUMAN RESOURCES AGENCY 109 N. Sunshine Blvd, Eloy, AZ 85131 (520) 466-1112 • Emergency services; utility deposit, utility payment assistance; rent/mortgage payment assistance

PINAL COUNTY DIVISION OF HOUSING 970 N. Eleven Mile Corner Rd, Casa Grande, AZ 85222 (520) 868-7200 • Transitional housing (6-month to 2-year stay)

YAVAPAI COUNTY

CATHOLIC CHARITIES - COTTONWOOD 736 N. Main, Cottonwood, AZ 86326 • (520) 634-4254

CATHOLIC CHARITIES - PRESCOTT 434 W. Gurley Street, Prescott, AZ 86301 • (928) 778-2531

Emergency housing, homeless services and support, rental assistance/subsidy

HOME FOR NOW 631 Division Street, Prescott, AZ 86301 • (520) 771-8542

PRESCOTT AREA WOMEN'S SHELTER (PAWS) 336 N. Rush St., Prescott, AZ 86301 • (928) 778-5933

PROJECT AWARE MEN'S SHELTER 215 W. Leroux, Prescott, AZ 86303 • (520) 778-7744

SALVATION ARMY 237 S. Montezuma, Prescott, AZ 86303 • (520) 778-0150

Emergency shelter, temporary housing, and/or transitional housing

U.S. VETS - PRESCOTT (Military Veterans) 6917 E. Gurley St. Prescott, AZ 86301 • (928) 583-7204

VA DOMICILIARY CARE PROGRAM 500 N. Hwy 89, Prescott, AZ 86313 • (520) 445-4869, ext. 6325 Residential rehabilitation for U.S. military veterans

WEST YAVAPAI GUIDANCE CLINIC 624 Dameron Street, Prescott, AZ 86301 • (520) 445-5211 Transitional housing (6-month to 2-year stay); Rental assistance/subsidy

YUMA COUNTY

CROSSROADS MISSION 944 Arizona Avenue, Yuma, AZ 85364 • (520) 783-9362

Emergency shelter and housing case management (homeless, less than 6-month stay)

CATHOLIC COMMUNITY SERVICES OF WESTERN ARIZONA 690 E. 32nd Street Yuma, AZ 85364 (928) 341-9400 • Emergency housing for homeless women and their homeless children due to domestic violence; Transitional housing (6-month to 2-year stay)

>>> **ARE YOU IN NEED OF ASSISTANCE IN LA PAZ OR SANTA CRUZ COUNTIES?** Contact 2-1-1 Arizona by dialing 2-1-1 within Arizona, or (877) 211-8661 from anywhere